



MIRUS ELITE G2



MIRUS ELITE G2 OVERVIEW

The second generation Mirus Elite G2 office chair includes new features, enhancing its functionality, outstanding movement and ergonomic support.

With exceptional back support, the next generation Mirus chair has been developed to fit and support the body and spine, allowing the user to stay comfortable for long periods. Upper and lower back regions are fully supported by our most advanced lumbar system, encouraging healthy posture.

The ingeniously simple single lever control continues to operate the three most frequently used chair functions (seat height, seat slide and back tilt) and a lever on the left side controls the new synchro forward seat tilt feature.

The Mirus boasts 97% recyclability, has Greenguard Gold Certification and meets EN 1335-1:2020 and EN 1335-2:2018. Available in a choice of mesh finishes, and in a black or grey frame with polished aluminium detailing and base.





MIRUS ELITE G2 FEATURES

FEATURES

- Synchro mechanism
- Right single lever for:
 - seat height
 - seat slide (50 mm)
 - lockable back tilt
- Left lever for forward seat tilt
- Recline tension control
- Integrated lumbar support with tension control
- Waterfall front seat
- 5D adjustable armrests:
 - height, width, depth, angle and armpad tilt
- Polished aluminium base with 65 mm dual castors

OPTIONS

- Black or grey frame
- Adjustable 3D headrest
- Fold-out footrest
- Pop-up coat hanger



MIRUS ELITE G2 CREDENTIALS



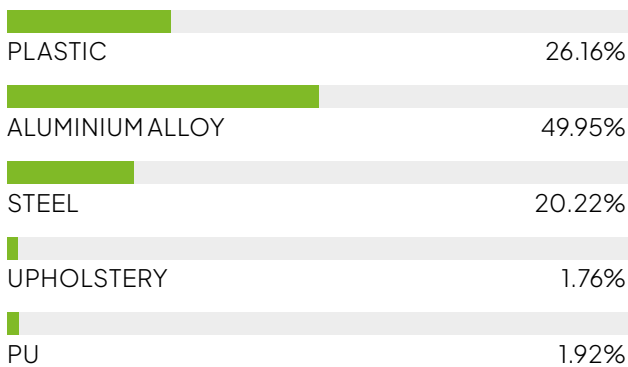
CERTIFICATION

- EN1335-1:2020
- EN1335-2:2018
- ANSI/BIFMA X5.1-2017
- GREENGUARD GOLD
Greenguard Certification Standards have established performance-based standards to define products and processes with low chemical and particle emissions for use indoors.

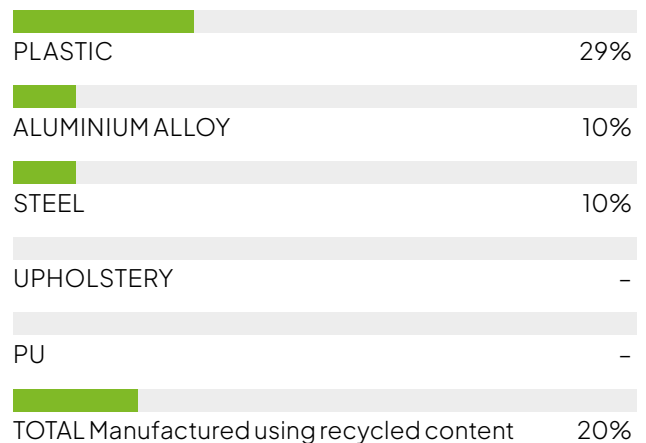
RECYCLABILITY



MATERIAL ANALYSIS



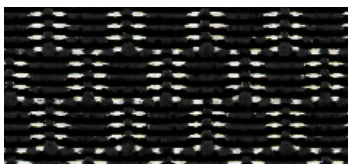
RECYCLED CONTENT



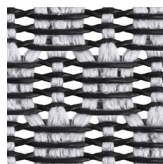


MIRUS ELITE G2 TEXTILES

T MESH



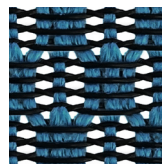
BLACK (STANDARD)
T-168-B1



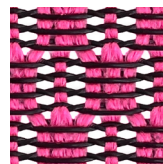
LIGHT GREY
T-168-B2



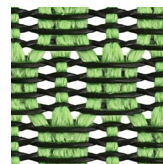
SCARLET
T-168-B3



COBALT
T-168-B4

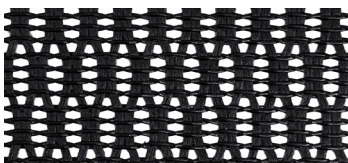


PINK
T-168-B5

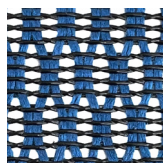


GREEN
T-168-B6

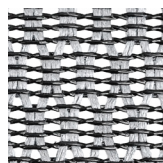
W MESH



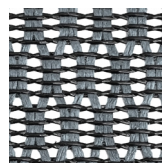
BLACK
W09-01



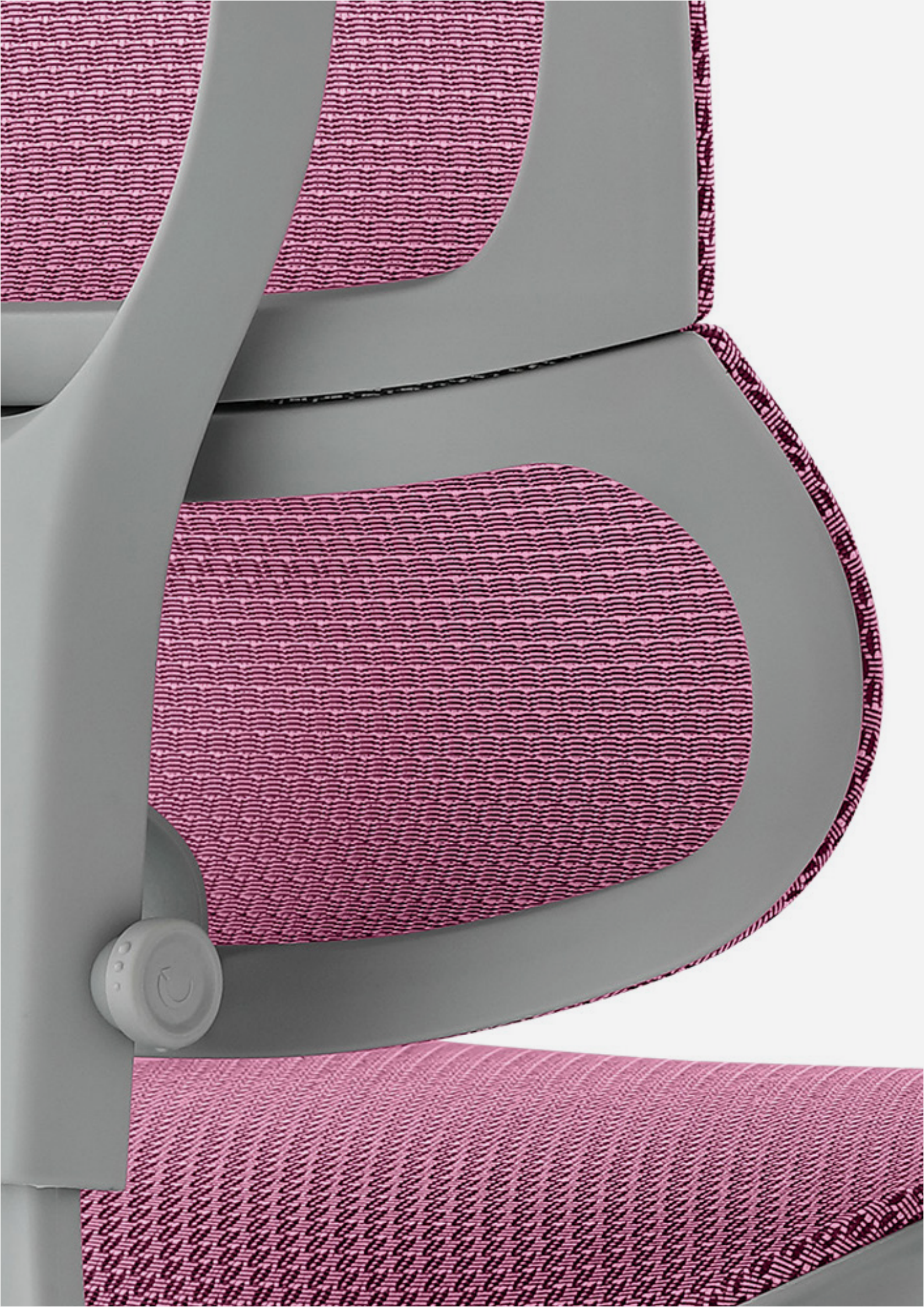
BLUE
W09-18



WHITE
W09-24



GREY
W09-53





The logo for COMFORTUK features the word 'COMFORTUK' in a bold, black, sans-serif font. The letter 'O' is replaced by a vertical rainbow gradient bar. The background of the page is composed of large, overlapping, curved shapes in teal, orange, yellow, red, and blue.

COMFORTUK HQ
Riverbank Mill
2 Stoneygate Road
Newmilns, Ayrshire
United Kingdom, KA16 9AJ

T+44 (0)1560 324 446
Ehello@comfort.global