



ENJOY ELITE G2



ENJOY ELITE G2 OVERVIEW

Sharing many of the features of the Ergohuman models, the redesigned Enjoy Elite G2 office chair delivers additional adjustability and intensive eight-hour day comfort.

The Generation 2 Enjoy Elite model features unique autoflex zones for back and lumbar support; an ingeniously simple single lever which operates the three most frequently used chair functions (seat height, seat slide and back tilt); and an additional lever on the left to control the new forward seat tilt function.

The integrated lumbar support now includes tension control for customised support, and the armrests have been updated with an ergonomic tilt-up feature, ideal for mobile device or gaming users.

The Enjoy Elite G2 boasts 97% recyclability, has Greenguard Gold Certification, and meets EN1335-1 and -2:2018, and ANSI/BIFMA X5.1.

Available in a black or grey frame with a polished aluminium base and in a choice of mesh finishes.





ENJOY ELITE G2 FEATURES

FEATURES

- Synchro mechanism
- Generous wide backrest
- Right single lever for:
 - seat height
 - seat slide (50 mm)
 - lockable back tilt
- Left lever for forward seat tilt
- Recline tension control
- Integrated lumbar support with tension control
- 5D adjustable armrests:
 - height, width, depth, angle and armpad tilt
- Enhanced waterfall front seat
- Polished aluminium base with 60 mm castors

OPTIONS

- Black or grey frame
- Adjustable headrest
- Fold-out footrest
- Choice of coloured mesh upholstery



ENJOY ELITE G2 CREDENTIALS



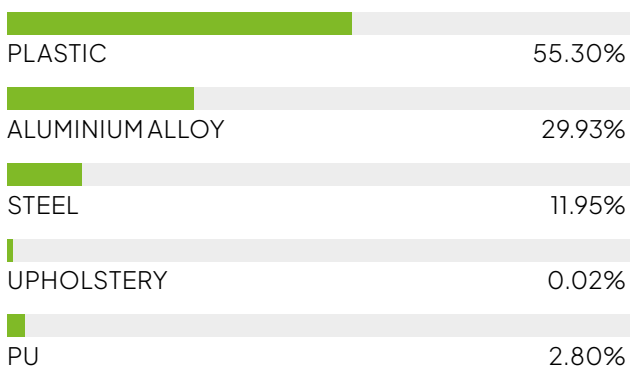
CERTIFICATION

- EN1335-1
- EN1335-2
- ANSI/BIFMA X5.1-2017
- GREENGUARD GOLD
Greenguard Certification Standards have established performance-based standards to define products and processes with low chemical and particle emissions for use indoors.

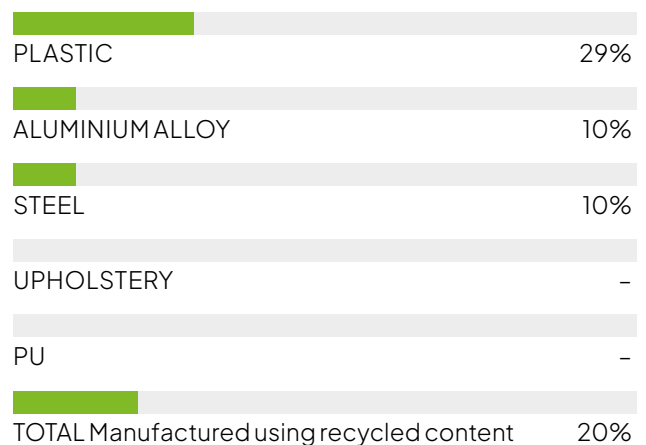
RECYCLABILITY



MATERIAL ANALYSIS



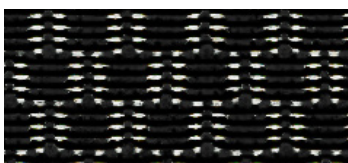
RECYCLED CONTENT



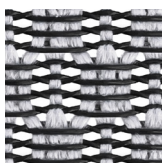


ENJOY ELITE G2 TEXTILES

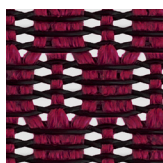
T MESH



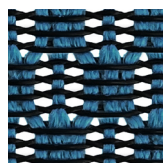
BLACK (STANDARD)
T-168-B1



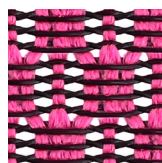
LIGHT GREY
T-168-B2



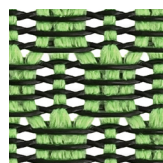
SCARLET
T-168-B3



COBALT
T-168-B4

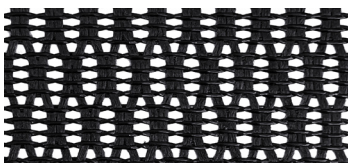


PINK
T-168-B5

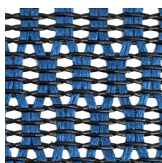


GREEN
T-168-B6

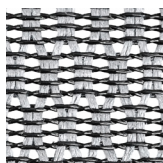
W MESH



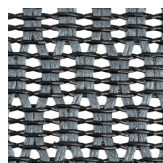
BLACK
W09-01



BLUE
W09-18



WHITE
W09-24



GREY
W09-53





The logo for COMFORTUK features the word 'COMFORTUK' in a bold, black, sans-serif font. The letter 'O' is replaced by a vertical rainbow gradient bar. The background of the page is composed of large, overlapping, curved shapes in teal, orange, yellow, red, and blue.

COMFORTUK HQ
Riverbank Mill
2 Stoneygate Road
Newmilns, Ayrshire
United Kingdom, KA16 9AJ

T+44 (0)1560 324 446
Ehello@comfort.global